

R E S I D E N T I A L P R O J E C T S

RESIDENTIAL PROJECT



ALINTANAHIN RESIDENCE Avida Settings Nuvali, Calamba

This three(3) storey residence embodies a modern concept living approach, where architecture, interior design, and smart functionality come together to create a seamless and comfortable lifestyle. Open spaces, natural materials, and strategic lighting enhance the home's ambiance, fostering a perfect balance between elegance and practicality.

RESIDENTIAL PROJECT



ASHEVILLE Tagaytay, Cavite

This loft-type villa residence offering a perfect blend of style, comfort, and function. It is ideal for individuals or families seeking a serene retreat with an elegant yet practical design that caters to both relaxation and entertainment.

RESIDENTIAL PROJECT



SANTOS RESIDENCE
San Jose, Navotas City

This renovation successfully revitalizes the home into a sophisticated yet inviting modern tropical haven, offering a warm, spacious, and energy-efficient living experience.

The design balances privacy, openness, and sustainability, making it ideal for modern living.

RESIDENTIAL PROJECT



SANTOS RESIDENCE
San Jose, Navotas City

RESIDENTIAL PROJECT



NUQUE RESIDENCE
BF Homes, Las Piñas

This design transforms an old single-story house into a modern two-story home, blending contemporary architecture with warm, natural elements. The renovation prioritizes spaciousness, functionality, and indoor-outdoor living, making it ideal for a modern lifestyle..



RESIDENTIAL PROJECT



CRUZ RESIDENCE
Finback st., Subic

This high-end vacation house seamlessly integrates cutting-edge architectural design with nature, offering an elevated living experience. The design showcases bold geometric structures, expansive glass facades, and luxurious amenities, making it an ideal retreat for relaxation and indulgence



RESIDENTIAL PROJECT



HASSIMAN RESIDENCE
Lunzuran, Zamboanga City

The Hassiman Residence is a tropical-modern sanctuary, balancing luxury and functionality while adapting to the local climate of Mindanao. It embodies warmth, openness, and sustainability, making it ideal for contemporary living in the region.



RESIDENTIAL PROJECT



IGTIBEN RESIDENCE Montserrat, Taytay Rizal

This contemporary two-story house with roof deck is designed to embrace Taytay, Rizal's naturally cool and breezy environment, offering a perfect balance of modern aesthetics, natural materials, and functional design for a comfortable living experience.

RESIDENTIAL PROJECT



VERGEL RESIDENCE

Merville, Parañaaque

The Vergel Residence is a stunning example of contemporary architecture, featuring a cantilevered design that blends modern aesthetics with functionality. This home showcases a sleek, geometric form that maximizes space, enhances natural light, and provides an open, airy atmosphere.

RESIDENTIAL PROJECT



ALONZO RESIDENCE Sucat, Parañaque

The Alonzo Residence is a striking example of modern urban architecture, designed to provide a serene retreat amidst the bustling city of Parañaque. The residence seamlessly integrates minimalist aesthetics, functionality, and sustainable features, making it a perfect urban dwelling.

RESIDENTIAL PROJECT



SLAT RESIDENCE
Malabon City

The Vergel Residence is a stunning example of contemporary architecture, featuring a cantilevered design that blends modern aesthetics with functionality. This home showcases a sleek, geometric form that maximizes space, enhances natural light, and provides an open, airy atmosphere.



RESIDENTIAL PROJECT



La Villa Condominium
Batasan, Quezon City

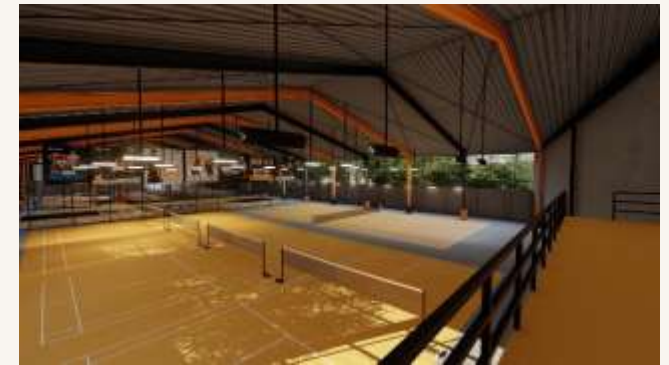
The 4-storey condominium building in Batasan, Quezon City, is a modern residential development designed to provide a balance of comfort, functionality, and contemporary aesthetics. Featuring a sleek, urban-inspired architectural style, this condominium harmonizes luxurious living with practicality, catering to individuals and families seeking a high-quality lifestyle in a prime location.





COMMERCIAL PROJECTS

COMMERCIAL PROJECT



PASSION SPORTS COMPLEX Valenzuela City

The Passion Sports Complex in Valenzuela City is a state-of-the-art multi-sports facility designed to promote an active and dynamic lifestyle for athletes and sports enthusiasts. With a modern and industrial-inspired architectural aesthetic, this facility aims to be a premier destination for training, competition, and community engagement.



COMMERCIAL PROJECT



MG BAR AND BILLIARDS

Valenzuela city

The MG Bar & Billiards is not just a gaming venue—it's a social destination where people come together to relax, compete, and enjoy high-quality entertainment. With its chic design, immersive ambiance, and top-tier amenities, it sets a new standard for billiards lounges and nightlife experiences.



COMMERCIAL PROJECT



CO BAN KIAT HARDWARE INC.
Binondo, Manila

The Co Ban Kiat Inc. (CBK) Headquarters in Binondo is a modernized workspace that reflects the company's 100-year legacy in the hardware industry while embracing contemporary design principles. This corporate space embodies efficiency, professionalism, and innovation, aligning with CBK's mission to be a leader in hardware distribution.



COMMERCIAL PROJECT



R NUBLA SECURITY INC.
Binondo, Manila

The R NUBA Office in Binondo presents a modern, minimalist, and professional workspace that emphasizes warmth, functionality, and contemporary aesthetics. The design seamlessly blends natural textures, open spaces, and sophisticated lighting, creating an environment that fosters productivity, collaboration, and comfort.



COMMERCIAL PROJECT



KIDCODE RACING
Navotas City

The Kidcode Racing facility, dedicated to the distribution of small CC racing motorcycles, is designed as a high-performance workspace that reflects the brand's passion for speed, precision, and innovation. The design seamlessly integrates functionality with an industrial-modern aesthetic, creating an efficient, stylish, and dynamic environment



COMMERCIAL PROJECT



BEER STOP

Cubao, Quezon City

Beer Stop is a modern and stylish gastropub, designed to be a go-to social hub for beer lovers and casual diners. The space combines industrial and contemporary aesthetics, featuring an inviting open-air balcony, warm lighting, and a lively atmosphere that makes it perfect for after-work drinks, social gatherings, and nightlife entertainment.



COMMERCIAL PROJECT



PANSIT MALABON EXPRESS

The Pansit Malabon Express kiosk features a modern Filipino aesthetic with a mix of natural materials, open space planning, and a warm, inviting ambiance. The design reflects the brand's identity as a casual and accessible Filipino food spot while incorporating elements of sustainability and contemporary retail architecture.



COMMERCIAL PROJECT



AMNEZIA SUPER CLUB

Tomas morato, Quezon City

The Amnezia Super Club in Tomas Morato offers a state-of-the-art nightlife destination, characterized by futuristic architecture, immersive lighting, and high-end VIP experiences. The combination of geometric LED designs, vibrant color schemes, and luxury seating arrangements makes it a top-tier venue for partygoers, DJs, and social elites.



COMMERCIAL PROJECT



MARO HOTEL AND RESORT
Tanay, Rizal

The Maro Hotel and Resort in Tanay, Rizal is a modern luxury destination designed to cater to motorcycle riders and travelers seeking an immersive nature experience. The design integrates contemporary architecture with the natural beauty of Tanay, known for its scenic mountain roads and lush landscapes.



COMMERCIAL PROJECT



LASEMA PARKING BUILDING Makati City

The Lasema Parking Building in Makati is a sleek and functional multi-level structure, designed to provide efficient and secure vehicle storage in a high-density urban area. Featuring a contemporary architectural design, the building maximizes space efficiency, accessibility, and modern aesthetics, catering to both commercial and private parking needs.



INSTITUTIONAL PROJECTS

INSTITUTIONAL PROJECT



SAN JOSE ACADEMY San Jose, Navotas City

The San Jose Academy in Navotas undergoes a modern renovation, transforming the school into a state-of-the-art educational facility that balances functionality, sustainability, and contemporary aesthetics. This redesign enhances the learning environment while maintaining the institution's legacy and commitment to quality education.

INSTITUTIONAL PROJECT



MICROBIOLOGY LABORATORY Los Baños, Laguna

The Microbiology Laboratory is designed with a futuristic and eco-friendly architectural approach, incorporating science-inspired aesthetics with functional efficiency. The exterior features a hexagonal glass facade, symbolizing molecular structures and biological cells, reinforcing the scientific nature of the facility..



INSTITUTIONAL PROJECT



MULTI-MEDIA CENTER
Los Baños, Laguna

The building's contemporary and industrial aesthetic is achieved through the use of exposed concrete, glass, and steel, emphasizing durability and a minimalist modern look. The large cantilevered roof and open facade create an inviting space while providing ample shade and ventilation.





INDUSTRIAL PROJECTS

INDUSTRIAL PROJECT



DAIRY PLANT

Los Baños, Laguna

The dairy manufacturing plant showcases a modern and functional architectural style with an emphasis on sustainability and efficiency. The structure features a large, angular roof with extended white structural supports that provide both aesthetic appeal and structural stability. The use of open spaces and glass panels allows for natural light and ventilation, reducing energy consumption.





DESIGN & BUILD

DESIGN AND BUILD PROJECT



PS RESIDENCE

Merville, Parañaaque

This luxurious Mediterranean-style home is designed to blend classic elegance with modern comfort, making full use of the large lot area in Merville Subdivision. Featuring warm earthy tones, spacious layouts, and natural materials, the design creates a timeless and inviting atmosphere.



DESIGN AND BUILD PROJECT



PS RESIDENCE
Merville, Parañaaque

This luxurious Mediterranean-style home is designed to blend classic elegance with modern comfort, making full use of the large lot area in Merville Subdivision. Featuring warm earthy tones, spacious layouts, and natural materials, the design creates a timeless and inviting atmosphere.

DESIGN AND BUILD PROJECT



PS RESIDENCE
Merville, Parañaaque

This luxurious Mediterranean-style home is designed to blend classic elegance with modern comfort, making full use of the large lot area in Merville Subdivision. Featuring warm earthy tones, spacious layouts, and natural materials, the design creates a timeless and inviting atmosphere.

DESIGN AND BUILD PROJECT



LA SALLE RESIDENCE
Sheridan Condominium, Pasig

The La salle Residence is a perfect balance of sophistication and comfort, offering stunning interiors, functional living spaces, and high-end features—all within the prime location of Pasig City. It's the ideal modern luxury home for city dwellers seeking style, convenience, and warmth.



DESIGN AND BUILD PROJECT



LA SALLE RESIDENCE Sheridan Condominium, Pasig

The La salle Residence is a perfect balance of sophistication and comfort, offering stunning interiors, functional living spaces, and high-end features—all within the prime location of Pasig City. It's the ideal modern luxury home for city dwellers seeking style, convenience, and warmth.

DESIGN AND BUILD PROJECT



STUDENT PAD

Urban Deca Homes, Ortigas

The design maximizes limited floor area by combining multiple functional zones into a single, cohesive layout. A compact bed area, workstation, and mini kitchenette are all neatly integrated, allowing a student to rest, study, and prepare meals without feeling cramped.



DESIGN AND BUILD PROJECT



STUDENT PAD
Urban Deca Homes, Ortigas

The design maximizes limited floor area by combining multiple functional zones into a single, cohesive layout. A compact bed area, workstation, and mini kitchenette are all neatly integrated, allowing a student to rest, study, and prepare meals without feeling cramped.

DESIGN AND BUILD PROJECT



PASSION SPORTS BASECAMP

Brgy. Sipac, Navotas City

combining an industrial-inspired shell with bold color blocking, large-scale branding, and motivational cues, the Passion Sports Basecamp in Navotas creates an uplifting environment. It's a space that encourages discipline, camaraderie, and the pursuit of excellence—perfect for training, community gatherings, and personal development through sports.

DESIGN AND BUILD PROJECT



BEEMO'S HIDDEN PATCH

Lipa City

Beemo's Hidden Patch Café & Resto is a beautifully designed outdoor-indoor dining retreat, offering a perfect blend of modern rustic aesthetics and nature-inspired elements. Designed for relaxation and a cozy dining experience, the café integrates warm tones, natural textures, and lush greenery, creating a welcoming and intimate atmosphere for guests.



DESIGN AND BUILD PROJECT



BEEMO'S HIDDEN PATCH

Lipa City



Beemo's Hidden Patch Café & Resto is a beautifully designed outdoor-indoor dining retreat, offering a perfect blend of modern rustic aesthetics and nature-inspired elements. Designed for relaxation and a cozy dining experience, the café integrates warm tones, natural textures, and lush greenery, creating a welcoming and intimate atmosphere for guests.

DESIGN AND BUILD PROJECT



FAMILY PAD

Urban Deca Homes, Ortigas

This layout is designed to accommodate a small family's daily routines in a compact environment. The main living area doubles as both a social space and an entertainment hub, with storage solutions seamlessly integrated to maintain an open, clutter-free look.



DESIGN AND BUILD PROJECT



FAMILY PAD

Urban Deca Homes, Ortigas

This layout is designed to accommodate a small family's daily routines in a compact environment. The main living area doubles as both a social space and an entertainment hub, with storage solutions seamlessly integrated to maintain an open, clutter-free look.