

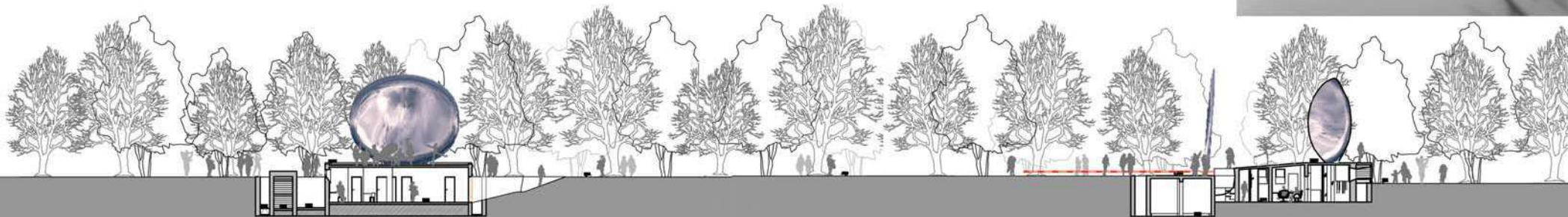
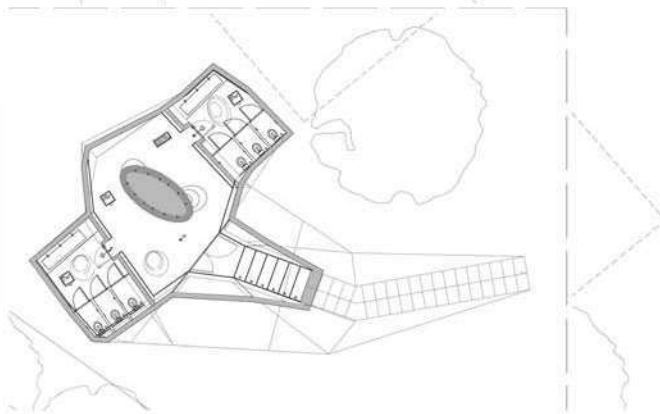
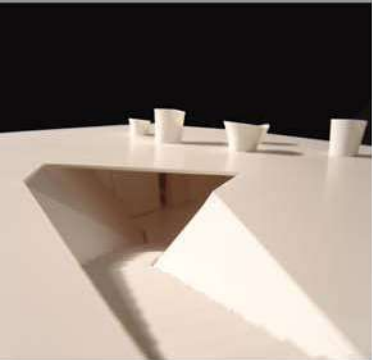
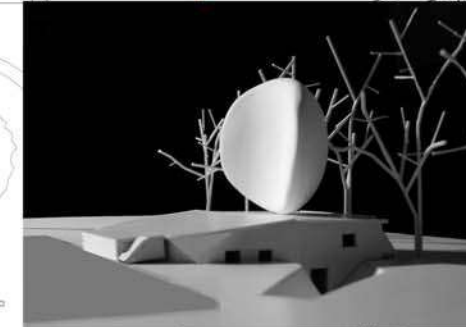
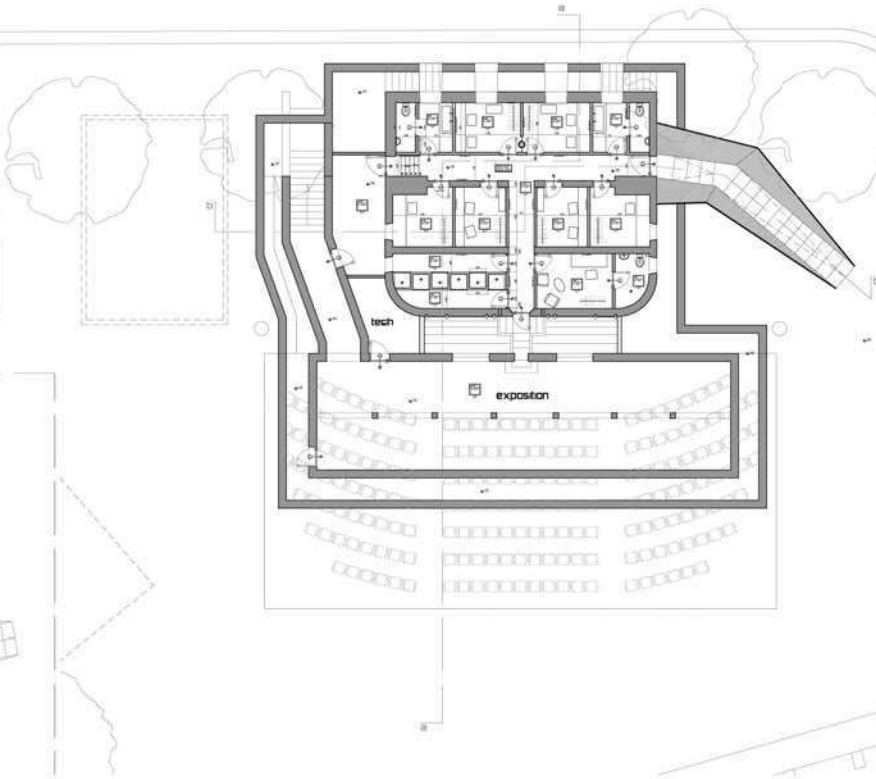
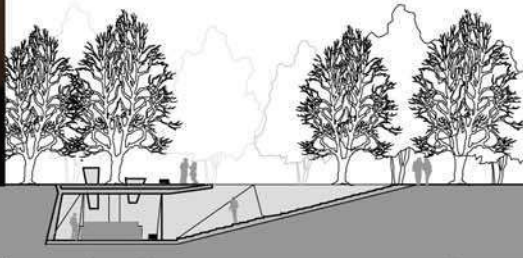
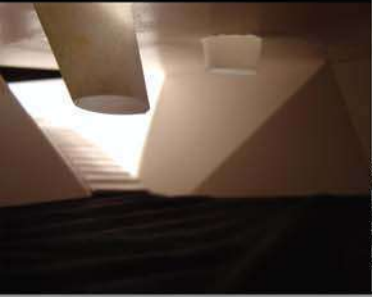
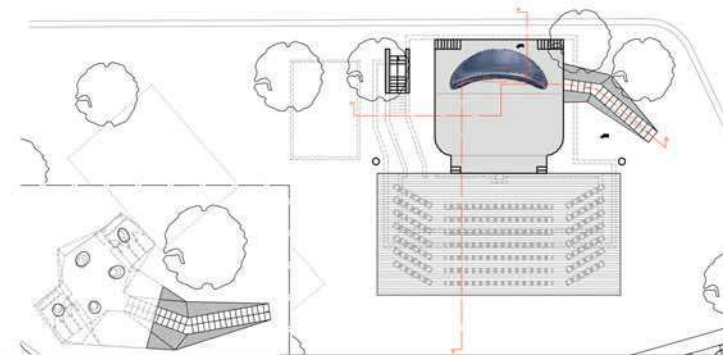
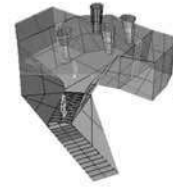


Project: Teatro Casina delle Rose - Roma - Italia

Architects Firm: Massimiliano Fuksas Architetto

Year: 2005

Project characteristics: Existing theatre in Villa Borghese - Rome - To be refunctionalised as an extension of the nearby Casa del Cinema.  
Project involves a new design for the basement, new stage, public toilettes and outdoors place for 180 spectators.

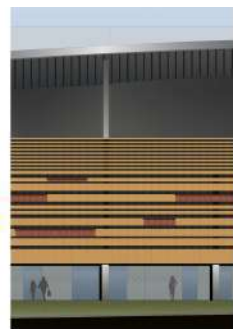




Front Entrance



Side Facades - Sections



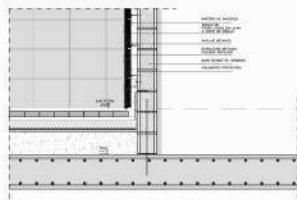
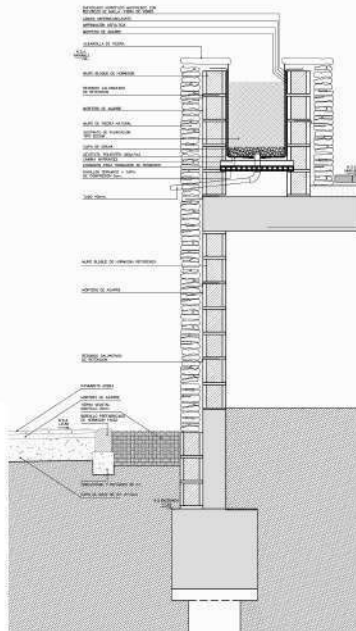
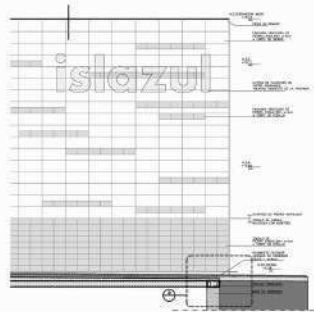
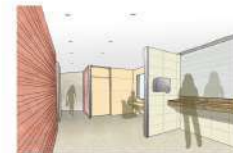
General Plan



Totem



Restrooms Area



Sections - Details

Project:  
Architecture Office:

Shopping and Leisure Centre - Espacio Caraba - Madrid  
L34 Arquitectos - Madrid - España - 2006

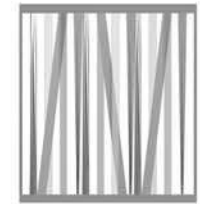
Description:

Project Assistant for architecture concepts and development of construction concepts and technical drawings.  
90000m2 Centre with commercial premises, cinemas, bowling alley, gym and a large covered plaza to carry out restoration and different kinds of shows and performances.  
The building counts with a wide a range of materiales, textures and facade engineering that lead to a meticulous architectural and construction detail study.



Carteles - Luminaria - exterior





Puertas Giratorias

marco de aluminio perimetral

lamas de aluminio lacado rectas torsionadas

lamas de policarbonato celular blanco hielo rectas

alzado

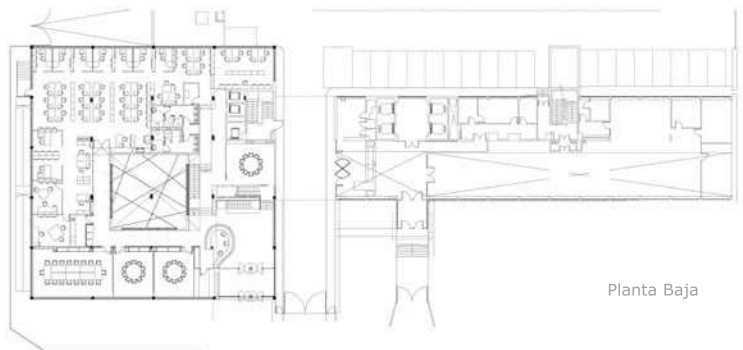


planta

Eje de rotación decentrado



Planta Primera



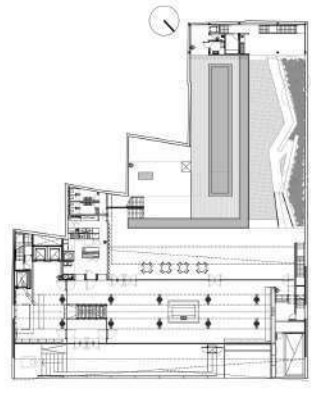
Planta Baja



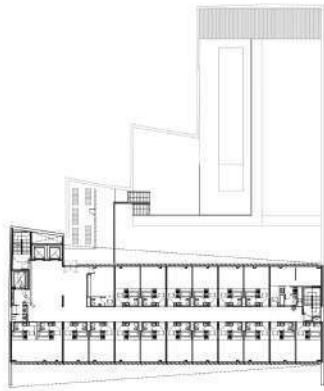
Project:  
Architects Firm:  
Year:  
Project characteristics:

Bassat&Ogilvy Headquarters - Madrid  
b720 Arquitectos  
2007-2008  
Design Project and Project Management for the new offices. 5000m2 developed in a Modern Movement building in Madrid. An existing interior patio turns into the heart of the building where social and special working activities take place. The cubic space of the patio is surrounded by fine steel and polycarbonate strips that create different types of reflections and transparencies. In order to integrate new spaces, sliding doors were designed at the lower level of the patio.

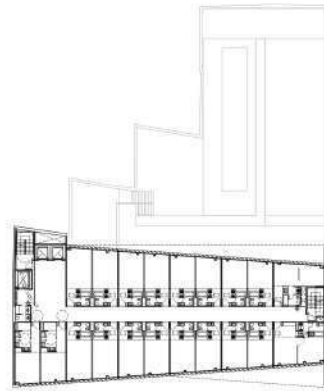




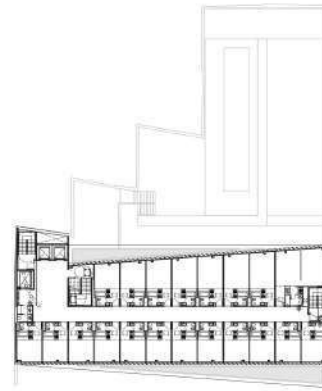
Ground Floor plan



First Floor plan



Second Floor plan



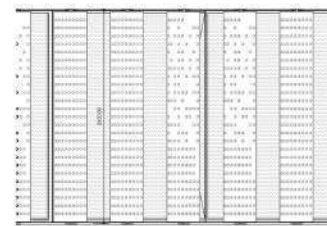
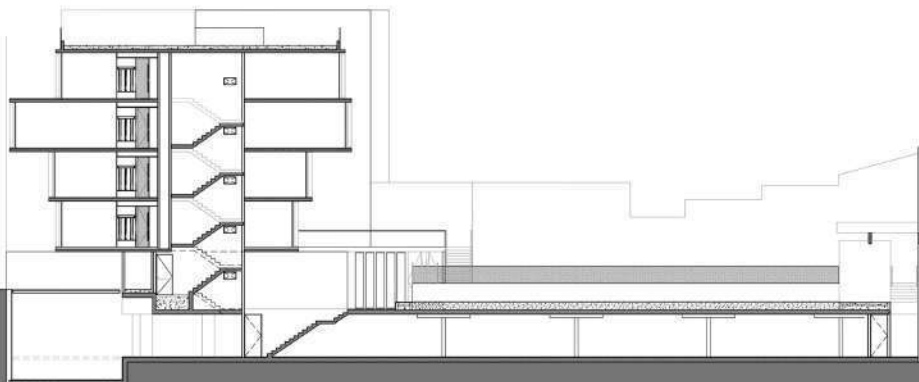
Fourth Floor plan

Project:  
Architecture Office:

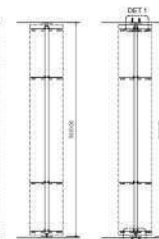
Hotel El Salvador - Buenos Aires - Argentina - 2015  
Dieguez Fridman Arquitectos - Project

Description:

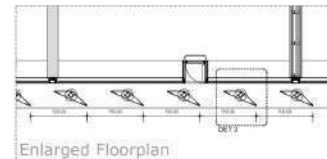
Project Leader for concept design and detailing of a 5000m<sup>2</sup> 3 Star Category Hotel in Buenos Aires. The building consists of 80 rooms distributed over 4 floors. Social Areas such as Reception, Rest Areas, Restaurant and Pool Garden, are placed at the ground floor. Technical Areas are located at the basement. Glass front and back facades are protected by floor to ceiling exterior parasols. These triangular base parasols are made of micro-perforated Corten Steel and count with system that guarantees their movement along a vertical axis. Sustainable architecture concepts such as solar panels, green roofs, wastewater recycling system for garden irrigation and sunlight control, are aimed to minimize environmental impact.



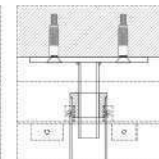
Enlarge facade



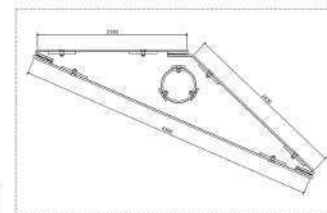
Parasol section



Enlarged Floorplan



Section Detail



Parasol Plan Detail



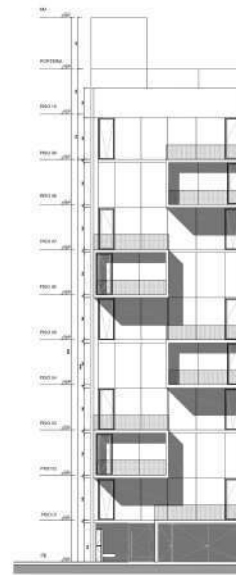


Project:  
Architecture Office:

Dorrego 1711 - Buenos Aires - Argentina - 2015  
Dieguez Fridman Arquitectos

Description:

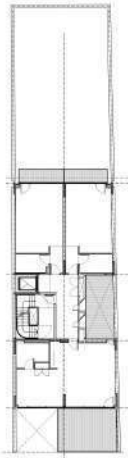
Project Leader for concept design and detailing of a 2000 m<sup>2</sup> Apartment Building in Buenos Aires. The project explores the generation of intermediate spaces that mediate between the outdoor public space and the indoor private areas. Located on a small site in the Palermo district of Buenos Aires, his project explores the potential of the differential between buildable area and buildable envelope in the city planning code. Voids generated in the façade generate outdoor terraces that mediate between the public street life and the private interiors. Interior voids work as double-height spaces that expand into the outdoor terraces. Units can be used for working and / or living as the neighborhood is attracting new inhabitants that mix with people working on the area's audiovisual and design industries. Smaller units in the front of the building are separated to generate the space occupied by the larger units. As a result, these larger units have a combination of single and double heights and an outdoor terrace as a continuation of the double-height sector. These units can be used as residences - with a bedroom in the single-height sector and a living/dining room in the double height- or as offices. Large and small units can be combined to generate more complex apartments where living and work can coexist in multiple ways.



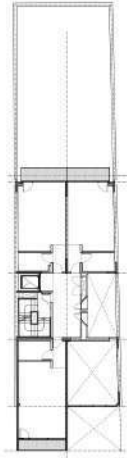
Front Facade



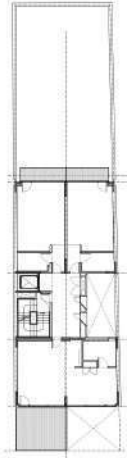
Ground Floor plan



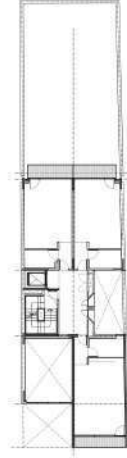
1st Floor plan



2nd and 6th Floor plan



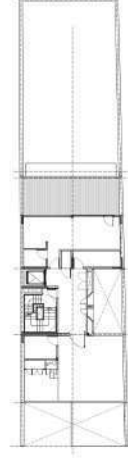
3rd and 7th Floor plan



4th and 8th Floor plan



5th and 9th Floor plan

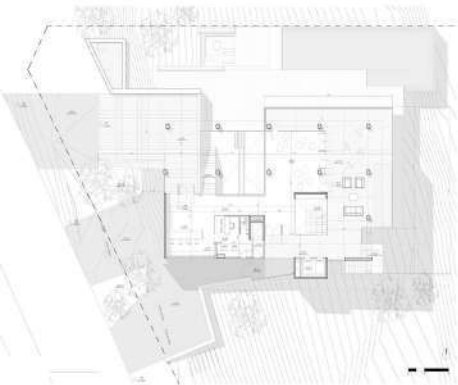


10th Floor plan

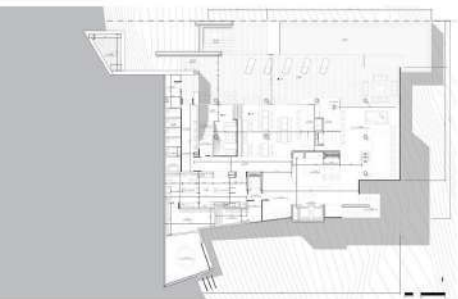




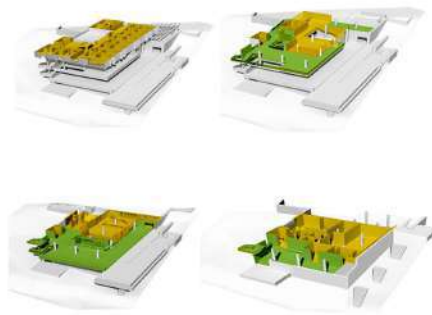
Planta Primera



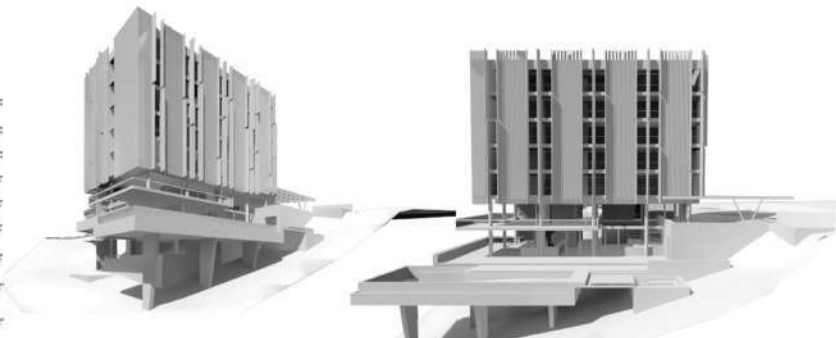
Planta Baja



Planta -1



Social Area Schemes

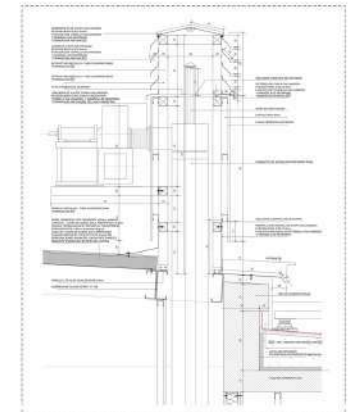
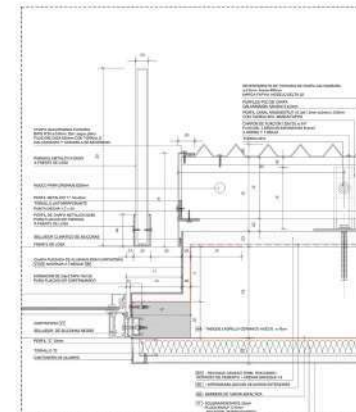


Project:  
Architecture Office:

Hostel Iguazú - Puerto Iguazú - Misiones - Argentina - 2021  
HOA - Hauser Oficina de Arquitectura - Construction in Progress

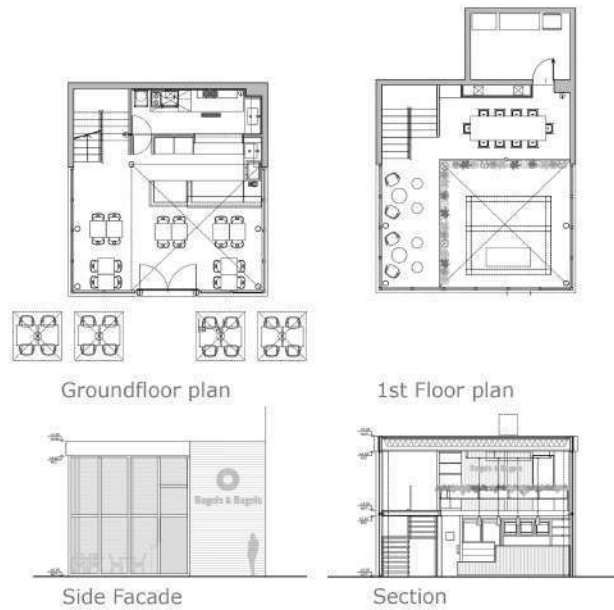
Description:

Project Leader for concept design and detailing of a 2500m2 Hostel. Placed in a sloping ground, the hostel seeks to integrate with the landscape by developing the social program in large interconnected spaces with views of the lush surrounding jungle. Private areas made up of the rooms are set off from the ground level prioritizing views and tranquility. Sustainable architecture concepts such as solar panels, cross ventilations, wastewater recycling system for garden irrigation are aimed to minimize the environmental impact. At the same time, the use of local construction materials and techniques reinforce the idea of a building that pretend to blend with the location.

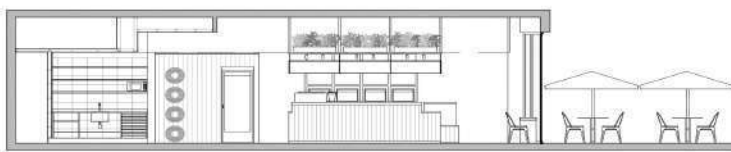
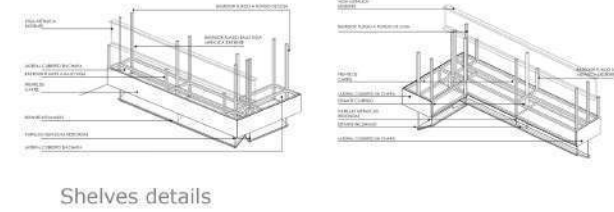




Nordelta - Tigre



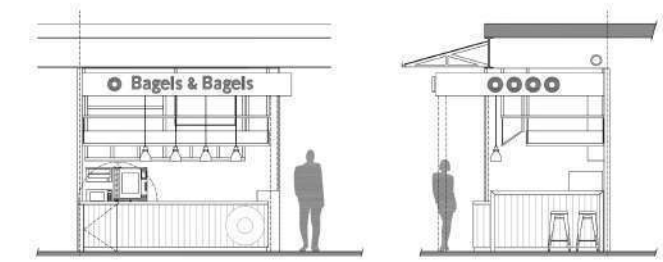
Buenos Aires



Project:  
Architect:  
Description:

Bagels & Bagels - Argentina - 2020 - 2021  
Pablo Roveran Arquitecto

Concept design, detailing and construction of Bagels & Bagels restaurants at different locations in Argentina. The gastronomic shops of Bagels & Bagels are characterized by prioritizing the exhibition of fresh products and natural food. This concept is reinforced with a design that, with its textures and materialities, responds to the different places in which they are located. The entry of natural light is prioritized, without neglecting the lighting design in order to create a pleasant atmosphere at different times of the day.



Sections

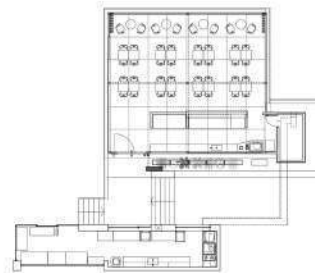
La Plata



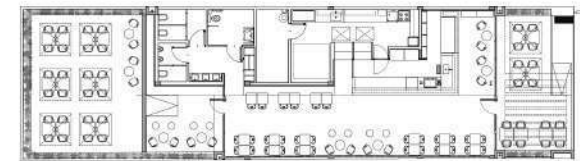


Caseros - Section

Bahia Grande - Tigre



Bahia Grande - Plan



Caseros - Plan



Bahia Grande - Section



Project: Bagels & Bagels - Argentina - 2022-2023  
 Architect: Pablo Roveran Arquitecto

Description: Concept design, detailing and construction of Bagels & Bagels restaurants at different locations in Argentina. The gastronomic shops of Bagels & Bagels are characterized by prioritizing the exhibition of fresh products and natural food. This concept is reinforced with a design that, with its textures and materialities, responds to the different places in which they are located. The entry of natural light is prioritized, without neglecting the lighting design in order to create a pleasant atmosphere at different times of the day.

Caseros - Buenos Aires

